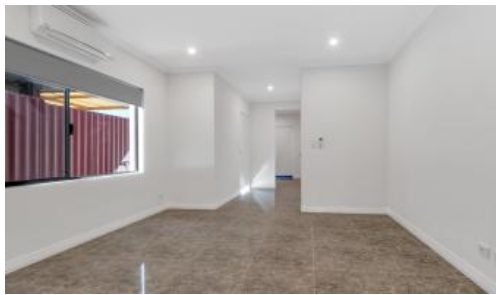


Sold



1B Swincer Way, Koondoola



Luxury Villa

Luxury Specifications each home includes

- High doors (2340 high vs typical 2040 high) with chrome locks
- Full height 300 by 600 tiles in bathroom
- 900mm wide Artusi Appliances (not the usual 600mm wide)
- 600mm Technika free standing dishwasher
- Panasonic Reverse Cycle Split System Aircon (in masterbedroom & living)
- Roller blinds to all living area windows & sliding doors
- Modern Skillion Roofs
- Triple Step Cornices throughout
- Triple Step Skirting Throughout
- 31C high ceilings throughout including in garage
- Plastered rendered finish on all external walls (including inside of garage)
- 600mm by 600mm glazed porcelain tiling to main living area
- Custom wardrobes in bedrooms
- 230mm by 230mm Exposed aggregate concrete pavers in driveway & alfresco

🛏 3 🗺 2 🚗 2

Price SOLD for \$350,000
Property Type residential
Property ID 149

Agent Details

Melvin Paul Singh - 0438458866

Office Details

Paradise Property Group
0861620961



The above information provided has been furnished to us by the vendor/s. We have not verified whether or not that information is accurate and do not have any belief in one way or the other in its accuracy. We do not accept any responsibility to any person for its accuracy and do no more than pass it on. All interested parties should make and rely upon their own inquiries in order to determine whether or not this information is in fact accurate.